



INFORMATION BROCHURE
FOR B.TECH. & B.ARCH. FIRST YEAR
2025-26



राष्ट्रीय प्रौद्योगिकी संस्थान रायपुर
NATIONAL INSTITUTE OF TECHNOLOGY RAIPUR

From the Director's Desk



Dear Students

We are delighted in extending a very warm welcome to you all on behalf of the entire campus family of National Institute of Technology Raipur. The Institute has a standing of more than five decades and has contributed to the nation building by producing talented technocrats. Our institute with intake of 1111 students is one of the largest amongst all the NITs. NIT Raipur has a large community of Alumni serving it.

This is the era of global market and tough competition. To be visible in the crowd, one has to have additional potential apart from the mandatory technical qualification. This calibre has to be developed over the period of time spent in the campus before graduating and leaving the Institute. There is no substitute to hard work and no short cut to success, for which, it will be our endeavour to groom all the students as all-rounders becoming worthy to take challenges of life squarely and turn out as good citizens of the country. I am sure students will get here ample opportunity for self-development. Moreover, there is a need to maintain proper balance between an individual's professional achievements with moral values, which would enable to become a successful human being. So, look within and discover your potential. Physical fitness, confidence, consistent striving, and time management will definitely take you on the path of success.

At NIT Raipur, I am sure that with vibrant campus, with cultural and technical activities, your stay will be remarkable and enjoyable. We will provide ample opportunities to build your character and hone your leadership skills.

I hope that you all are safe & wish you good luck & success in the time ahead.

Dr. N. V. Ramana Rao
Director, NIT Raipur

Historical Perspective of The Institute

Till 1956, there were only three technical education institutes in the country offering courses in the fields of Mining and Metallurgical Engineering. Keeping in view of this fact and with an aim to harness the mineral resources of the region, the Government College of Mining and



Metallurgical Engineering was set-up on 1st May 1956. The first President of India, Honorable Dr. Rajendra Prasad laid the foundation stone of the college building on 14th September 1956. The college was inaugurated on 14th March 1963 by India's first Prime Minister Pt. Jawaharlal Nehru. The first session of the college commenced on 1st July 1956 with the admission of 30 students in Mining and Metallurgical Engineering each. In 1958, additional courses in Civil, Mechanical and Electrical Engineering were incorporated and the college came to be known as Government College of Engineering and Technology. Later graduate courses in Chemical Engineering (1965), Architecture (1984), Electronics and Telecommunications (1985), Information Technology (2000), Computer Science and Engineering (2000), Biotechnology (2003) and Biomedical Engineering (2003) were introduced.

The college was accorded the status of National Institute of Technology (an Institution of National Importance) on 1st December, 2005 in its golden jubilee year. The institute offers undergraduate Degree courses in Civil Engineering, Mechanical Engineering, Electrical Engineering, Mining Engineering, Chemical Engineering, Metallurgical Engineering, Electronics & Telecommunication Engineering, Information Technology, Computer Science & Engineering, Bio Technology, Bio Medical Engineering and Architecture. The Institute offers two years M. Tech. program in Civil Engineering, Information technology, Electronics & Communication Engineering, Mechanical Engineering, Chemical Engineering and Electrical Engineering. M. Tech. in Applied Geology and three year post graduate course leading to the Degree of Master of Computer Applications are offered by this Institute. Also the institute offers two year post graduate degree courses, Master of science in Chemistry, Mathematics and Physics.



After having the status of NIT, the Institute has shifted its emphasis from undergraduate teaching to undergraduate as well as postgraduate teaching and research. Ph.D. program is also offered in almost all disciplines. After receiving the deemed university status in 2007, the Institute has promulgated its own ordinance, rules and regulations for undergraduate, postgraduate and Ph.D. programs. At present, more than 300 Ph.D. scholars are pursuing their research work in the Institute.

The revision of curricula in all the branches have been done to include the latest content in science, engineering and technology after considering the inputs from various stakeholders, mainly the concerned industries, research laboratories and leading academic institutions in country. This Institute is the largest amongst all the NITs for running a number of undergraduate programs and in its student intake. The modernization and upgradation of infrastructure and facilities is ongoing. Every year substantial budget is being allocated for the modernization of laboratories and research facilities.

The results are visible in terms of the growing numbers of research publications from the students and faculty members. The number of journals (online and print) have been increased to provide the latest update in various cutting edge research avenues. The Institute has recently constructed 800 seat capacity boys and 150 seat capacity girls hostel. A new campus is planned to be developed in 225 acres near Rakhi Bharenga about 25 kms away from present campus. The finalization of the blueprint for the construction of new campus has been done and an MoU has been signed with CPWD to prepare a detailed project report.

Hostels

The Institute has seven boys and three girls hostels in the campus including a 800-seater new boys hostel. Each hostel is self-contained with amenities such as a common room and a dining hall with mess. All the hostel rooms are adequately furnished. Each old hostel has a capacity to house about 100 students.



The administrative head of each hostel, the warden, is a senior faculty member. One caretaker/matron for each hostel is posted to manage the day-to-day affairs of the hostel. Each hostel has different students' working committees viz mess, discipline and cleanliness committee. A central hostel administrative section coordinates the matters related to the Institute hostels. Three hostel blocks of 100 seats each are reserved for the boys from the first semester students. The seats are allotted to the students on the basis of their merit and distance of home town. The hostel administration compiles the applications for hostel admission and after due verification, the selection list is declared subsequently.

Dispensary

The dispensary in the campus is located near new faculty quarters. The hostel warden, chief warden, medical officer or Dean (Students' Welfare) maybe contacted in case of any medical emergency. The contact details of doctors are: Dr. Sameer Sankar (9993932256), Dr. Soumya Agrawal, MBBS, (8839317160), Dr. (Mrs.) Shubha. B. Koshley, MBBS, DOMS (9993932256). Ambulance facility is also available.

Central Library

The Central Library is situated in the main building. It has a good collection of textbooks and reference books (more than 1 lakh) in general library section and book bank section. The central library has subscribed to 50 numbers of print journals, 31 numbers of magazines and 16 numbers of national & state level newspapers. It has a rich collection of e-resources which include nearly 1,50,000 e-books, subscriptions to 16 online databases having nearly 6700 full text e-journals and 690 online journal archives (back files of journals) related to all branches. The library automation program through LibSys7- a library management software, is in progress. The Web OPAC can be access from anywhere to know about the collections of the library. Fully wifi enabled and air conditioned reading room with 74 seating capacity and digital library services remains open from 9 am to 8 pm on weekdays and Saturdays. It caters to the information and document need of nearly 5000 users consisting of faculty members, staff, B.Tech. / M.Tech. / MCA students and research scholars satisfactorily. The details of central library can be accessed at: <http://www.nitr.ac.in/dept-cl.php?dept=About%20us..>

Central Computing Centre (CCC)

The Central Computer Centre (CCC) within the NIT Raipur Campus aims at providing up-to-date professional Information and Communication Technology Services. It imparts the high-end-ICT education in addition to managing and administrating Campus-wide Network, Computational Infrastructures of the Institute. The working time of CCC is from 10 am to 8 pm.

Data Center

The Datacenter at NIT Raipur houses the ICT equipment racks including Server and Network racks, UPS, Generator Backup, Cooling System, Fire Detection and Suppression, Access Control, CCTV Surveillance and Critical Parameter Monitoring and Alerting. The Data Center is designed to function round the clock and provide a failsafe and secure environment for ICT equipment running several useful applications for NIT Raipur's user base of ~ 7000.

Gymnasium

A gymnasium is housed in sports department of the institute.

Girls Common Room

A new "Girls Common Rooms" has been instituted in the I-floor of the Architecture Department Building. It is equipped with all amenities for girls.

Amenities & Facilities

Play Ground

The Institute had reserved 80,000 sq. meters area for sports viz, cricket, hockey, football, volleyball, tennis etc, where the students can test their physical stamina and satisfy the Olympian Spirit.

Canteen

The canteen is located near the main building for the students, faculty members and staff.

Amul Parlor

There is an Amul Parlor near main ground where the milk products are available. There is a stationery shop with photocopy facility inside the campus.

State Bank of India

A branch of State Bank of India with an ATM is functioning in the campus. The ATM is located adjacent to the Architecture Department building. SBI offers e-collection facility for students where they can deposit their fees online.

B-Mart

B-Mart is a new supermarket within the NIT Raipur Campus. Stationery and other daily needs for the students and employees are available at an affordable price.

Coffee Day Beverage

The facility of Coffee Day Beverage exists within the NIT Raipur Campus. It caters to the daily requirements of beverages for students and employees.

Indian Coffee House (ICH)

Indian Coffee House (ICH) is also available within the institute campus. It is located in the ground floor of the "Golden Tower" of Alumni Association.

Vachan Milk Parlour

The facility has a wide range of dairy products & foods items where students & employees etc can eat as well as interact with their peers.

Estate Office

Maintenance of the entire campus is done by Estate Office with its civil and electrical wings.

Police Station

Saraswati Nagar Police Station is situated near NIT Campus.

Railway Station

The Saraswati Nagar railway station has a stoppage for all the local and major passenger trains.

Students' Forum

NITRR Newsletter MIRROR

MIRROR is the official newsletter of NIT Raipur published by PMRC. Mirror provides brief insights about the latest events happening around the Institute. From placement statistics, students' achievements to the latest workshops, events organized within NIT Raipur, Mirror has got it all covered.

MIRROR aims to keep the students, faculties and staff members, alumni and all other wellwishers updated with the latest significant developments of the Institute. It facilitates communication and establishes synergistic connections by expressing commendable achievements of the Institute. It show case breakthrough research, innovative projects, noteworthy collaborations academic achievements community initiatives etc

The publication frequency of the newsletter "MIRROR" is quarterly. The students are advised to read the MIRROR magazine regularly. To receive the soft copy of the magazine, Media Cell may be contacted at mirror@nitrr.ac.in. The chairperson is Dr. N.D. Londhe.

Social Media Handles

Social Media Accounts of the Institute provides students with the opportunity to get better connection with the Institute.

Students are advised to create their social media accounts on various platforms (Facebook, Twitter, LinkedIn, Instagram and YouTube) and like/ follow NIT Raipur.

links for the same are

Facebook:<https://www.facebook.com/nitrr.raipur/>

Twitter:<https://twitter.com/NITRR>

Instagram:<https://www.instagram.com/nit-raipur/>

LinkedIn:<https://www.linkedin.com/school/national-institute-of-technology-raipur/>

YouTube:<https://www.youtube.com/channel/UCOesbqS3Lc9zXRddcfOuwPw>

FIRE (Free and Informal Right Expression)

The institute regularly conducts the FIRE session chaired by the Honorable Director and various administrative to invite the suggestions from students related to their campus and hostel life, training placements, academics examination etc.

HeAL (Health Awareness Lesson)

The institute regularly conducts the HeAL session in order to educate and aware the students on various physical and mental health's issues, fitness, hygiene etc. by professional experts.

The objectives of the Student Activity Committee are:

- To foster a sense of brotherhood among all Institute students by bridging gaps in gender, cultural preferences, and disparities in state of origin, academic program, and branch of study.
- To promote extracurricular activities among all students at the Institute.
- To help students in developing their leadership, entrepreneurship, and innovative skills.
- To conduct INTER-NIT competitions in Technical, Cultural, Athletics, and to organize other inter-institutional activities.
- To contribute to the development of a multicultural environment where students from various cultural backgrounds can cordially exchange experiences.
- The activities of SAC are organized under four societies, each society focusing on one major aspect of campus life. The societies are:
 1. Technical Committee (TS)
 2. Health & Fitness Committee (H)
 3. Cultural Committee (CS)
 4. Societal Committee (FM)

The major activities of each society are broadly elaborated in the following sections. However, society is free to expand its activities from time to time depending on the interest of the students. The broad functions of each society are listed below.

Cultural Committee

- To organize different Institute level functions i.e. Independence Day, Republic Day, Institute foundation day, Cultural Fest of Institute etc.
- To organize cultural events like Inter-department/hostel competitions and Inter Institute competitions.
- To organize the major cultural event of the year – the two/three-day long Institute Cultural festival "Eclectika".
- To make a conscious effort to create a multicultural environment by promoting cultural events from different states of India.

HEALTH & FITNESS COMMITTEE

- To encourage all students at the Institute to participate in Yoga, games and sports activities of their choice.
- To administer games and sports activities on a day-to-day basis, and to organize the Yoga day, Olympic Day and major Yoga and sports event of the year – the three-days long sports activity "SAMAR".
- To administer participation of NIT Raipur students in reputed national level sports / athletics competitions.
- To organize coaching of students in various disciplines of games and sports.
- To organize sports activities among incoming students with an objective of inducting them into the student mainstream.
- To organize Seminars, Workshop, training camps etc. on sports, games and related areas.

Societal Committee

- To Foster a sense of belonging and camaraderie among members and Encourage networking, friendships, and social support.
- To Create a stress-free environment for members to relax and enjoy.
- To Promote awareness about social, environmental, or cultural issues.
- To Conduct campaigns, discussions, and awareness drives.
- To Academic and Career Support (especially in student clubs) and promote intercultural understanding and inclusion.
- Promote community service and social responsibility. Organize donation drives, blood camps, or support visits to orphanages/shelters/villages.
- Collaborate with NGOs for volunteering and outreach programs.
- To promote and encourage extracurricular activities of students in the areas of creative writing, poetry, drama, art, craft, sculpture, painting, photography, quizzes etc.
- To conduct workshops on creative writing and organize National or Institute level competitions
- To organize Heritage walk under Yuva tourism, Unnat Bharat Axiyan, Awareness programme on Nasamukti, Plastic pollution etc.
- To encourage the students and faculty in awareness, capacity building, and community resilience initiatives.

Responsibilities of the Professor In-charge of Committee

- To prepare, obtain approval from Authorities and publish the annual calendar of activities and the budget of the Society.
- Conduct the meeting of the society at least once a month to review the progress of various activities.
- Encourage the students for participation in the activities of the respective societies and promote the interest of the students.
- To promote good hobbies and habits for the students and encourage students to actively take part in various competitions organized at NIT and by outside agencies
- To represent student committee in various forums of the institute.
- To organize Institute Day and award of certificates and divide responsibilities among Faculty In-charge of different clubs/committees.

Responsibilities of the Faculty In-charge of Clubs

- To prepare, obtain approval and publish the annual calendar of activities and the budget of the club.
- Conduct the meeting of the club at least once a month to review the progress of various activities.
- Guide and advise the students from time to time.
- Take lead role if the club in conducting major events with help of overall coordinator

Students' Forum

- Select teams for participation in competitions organized by both NIT Raipur as well as other institutes.
- Encourage the students for participation in the activities of the respective societies and promote the interest of the students.

The student members of different clubs

The activities of the different clubs/committees will be managed by the student body through its selected representatives. The collective body of all functionaries, consisting of the Dean (SW), the overall coordinators, the faculty in-charge, all the student representatives is called the student's body. The student body will meet at least twice in each semester, at the beginning and end of each semester. It will review and recommend the annual budget and approve the activities/ expenditure of all the societies/clubs.

The Executive Council

The Executive Council will be headed by the Dean (Student Welfare). The day-to-day affairs of the committee/clubs will be managed by the overall coordinators, faculty in-charge (1 for each club) and student members (one overall student coordinator from each club). Every club will be managed by one faculty in-charge and a student body consisting of students Representatives from the club.

The Director shall appoint a faculty member of the Institute as the overall coordinators for different committees who will function under the guidance of the Dean (Student Welfare).

Selection of Student Members

The affairs of Students Activity shall be managed primarily by the student bodies of different club/committee under the guidance of faculty in charge. While the overall coordinators for committees and faculty in-charge of clubs are nominated by the Director NIT Raipur, and students' coordinators/representatives are selected by the Faculty in-charge of club in coordination with the overall coordinator of committee. Selections will be held in the beginning of the academic year that is month of June-July.

STUDENT CLUBS

In addition to the four constituents of the Students activity committee, students will be free to create and operate smaller forums which will be focused on specific activities. A club may be established with a specific objective that is useful to students and does not conflict with that of an existing club. It should have a well-defined constitution, source of income and plan of expenditure. It must not discriminate, directly or indirectly, against students on grounds of religion, caste, state origin, gender, academic program or any other criterion.

The Details of committees, clubs and their coordinator and Faculty in charges are as follows:

| Name of Committee | Overall Coordinator | Name of Club Under Committee | Faculty In charge of Clubs |
|--|--|------------------------------|---|
| CULTURE COMMITTEE | Dr. Suvendu Rup, Associate Professor, Information Technology | Raga Club | Dr. Awanish Kumar, Associate Professor (Biotechnology) Dr. D. Vasanth, Associate Professor (Biotechnology Engineering) |
| | Dr. Moksha Singh, Associate Professor, Humanities and Social Science (Team Sanskriti) | Dance Club | Dr. Anil Manjhi Assistant Professor (Humanities and Social Science) Dr. Shruti Sarad Nagdeve, Assistant Professor (Architecture & Planning) |
| | | Abhinay Club | Dr. Nisha Netam, Associate Professor (Mechanical Engineering) Dr. Kabita Biswas Sharma, Assistant Professor (Architecture & Planning) |
| | | Click Club | Dr. Ankur Gupta, Assistant Professor (Mechanical Engineering) Dr. Ramavath Bheekya Naik, Assistant Professor, (Met. & Mat. Engg.) |
| SOCIETAL COMMITTEE | Dr. D. C. Jhariya Associate Professor, (Applied Geology) | Go Green Club | Dr. Govind P. Gupta, Associate Professor, (Information Technology) Dr. Kanhaiya Shanker Ojha Assistant Professor (Department of Physics) |
| | | Shayog and Mental Club | Dr. A. K. Dash Assistant Professor, (Mining Engineering) Dr. Soumya Agrawal, Medical Doctor, (Health Centre) |
| | | NSS Club | Dr. Tirath Prasad Sahu Assistant Professor (Information Technology) Dr. Nitesh KBharadwaj Assistant Professor (Computer Science) |
| | | NCC Club | Dr. Neeraj Manhas Assistant Professor (Department of Mathematics) Dr. Jitendra Kumar Rout Assistant Professor (Computer Science Engineering) |
| | | DRR Club | Dr. Chandan Kumar Singh Assistant Professor (Civil Engineering) Dr. Ashish Kumar Vishwakarma Assistant Professor (Mining Engineering) |
| HEALTH & FITNESS COMMITTEE | Dr. Rajana Suresh Kumar, Associate Professor Mechanical Engineering (Team Shurya) | Sport Club | Dr. Deepak Singh Assistant Professor (Computer Science) Dr. Alfia Bano, Associate Professor (Civil Engineering) Mr. Kamal Maan Singh, SAS, Sports Department |
| | | Yoga Club | Dr. Debasisha Mishra Associate Professor (Deptt. of Mathematics) Dr. Shashikanta Tarai Associate Professor (HSS) |
| RAJBHASA & LITERARY COMMITTEE | Dr. Sanjay Kumar Associate Professor Information Technology | Raj Bhasa Club | Dr. Sharda Nandan Row, Associate Professor (Deptt. of Mathematics) Dr. Vikas Kumar Vidyarthi, Assistant Professor (Civil Engineering) |
| | | Literary Club | Dr. Y. Vijaya Babu Associate Professor (HSS) Dr. Chetna Sharma Rajput Assistant Professor (HSS) |

Anti-Ragging Measures

Due to grave consequences reported, the Supreme Court of India has taken strict stand against incidents of ragging in academic institutions. Therefore, all the academic Institutions have taken measures to ensure ragging free campuses. In line with the guidelines, the Institute has constituted anti-ragging committee consisting of senior faculty members. The incidents of any attempt of ragging must be brought to the notice of this team. The contact numbers are appended herewith.



UNIVERSITY GRANTS COMMISSION
BAHADURSHAN ZAFAR MARG
NEW DELHI

No. F.1-21/2009 (Anti Ragging)

March 2012

NOTICE

In pursuance to the Judgment of the Hon'ble Supreme Court of India dated 08.05.2009 in Civil Appeal No. 887 /2009, the University Grants Commission has framed "UGC Regulations on curbing the menace of ragging in higher educational institutions, 2009" which have been notified on 4th July, 2009 in the Gazette of India. These regulations are mandatory for all Universities / Institutions. The UGC has made it mandatory for all students / parents to submit anti ragging related affidavits to the institutions at the time of admission. Now it is brought to the notice of all Universities, Institutions, Students and Parents that these affidavits can be downloaded from the web site of UGC and or related other web sites.

JS (ARC)

The court observes that Ragging is any disorderly conduct, whether by words spoken or written or by an act which has the effect of teasing, treating or handling with rudeness any student, indulging in rowdy or undisciplined activities which cause or are likely to cause annoyance, hardship or psychological harm or to raise fear of apprehension thereof in a fresher or a junior student and which has the effect of causing or generating a sense of shame or embarrassment so as to adversely affect the psyche of a fresher or a junior student.

Anti-Ragging Measures

Ragging includes but not limited to:

- Asking fresher to address seniors as Sir
- To dress in a specific dress code for a particular period of time
- To sing vulgar song or use abusive language.
- To do odd acts like cleaning the room of seniors, washing their clothes, fetching water, tea, breakfast, cigarettes or alcohol and even completing their class assignment.
- To do an act sexual in nature orto undress (stripping) orto sing pornographic limericks orto see pornographic items.
- To enact orto do silly things like kissing, proposing someone from opposite sex etc.
- Asking to try smoking, drugs or alcohol.

The Disciplinary Rules

- A. If any fresher is tortured physically, mentally or emotionally by the senior students of the institute, he/she should report the matter immediately to the hostel warden/any faculty member of the institute as well as parents. The identity of the reporting student will not be disclosed. There is an undertaking at the end of this document which should be submitted by the student and his/her parents at the time of admission.
- B. Physical, emotional and mental torture in any form to fellow students, seniors and juniors is a punishable act. The minimum punishment in such cases is in the form of fine and the maximum punishment is rustication of the accused. The maximum fine levied on this ground will be Rs. 20,000 per student. Such students will be debarred from the campus placements by the Training and Placement Cell of the institute.
- C. Any misbehaviour in the institute with the faculty members or higher authority will be treated as serious misconduct. Any form of harassment to girl student or female faculty through undesirable activities will be viewed seriously. The notorious students found guilty will be rusticated from examination and the same will be mentioned in the character/conduct certificate.
- D. Use of drugs/alcohol is strictly prohibited in the hostel and campus. The student caught red handed or proved guilty of consuming drugs/alcohol will not be allowed to enter the campus for a minimum period of one year.
- E. In case of damage to the property that is hostel/class room/campus the amount of damage will be decided by the institute authorities and shall be recovered from concerned students.

Please visit the site to fill anti-ragging undertaking online:

http://antiragging.in/site/affidavits_registration_form.aspx

ANTI RAGGING HELP LINE

| | | | |
|----|--------------------------------------|---|-------------|
| 1 | Dr. N V Ramana Rao | Director | 9849054319 |
| 2 | Dr. Manoj Kumar Chopkar | Dean, Students' Welfare | 8109939981 |
| 3 | Dr. Pavan Kumar Mishra | Associate, Dean, Students' Welfare | 7566011780 |
| 4 | Dr. Meena Murmu | Associate, Dean, Students' Welfare | 8085857017 |
| 5 | Dr. (Mrs.) S. Gupta | Dean, Academics | 9993244929 |
| 6 | Dr. Shubhankar Bhowmick, | Associate Dean, Academics PhD | 9575955040 |
| 7 | Dr. Naresh Kumar Nagwani | Associate Dean, Academics PG | 9993312001 |
| 8 | Dr. Subhojit Ghosh | Associate Dean, Academics UG | 8225817389 |
| 9 | Dr. Guru Prasad Subas Chandra Mishra | Dean, Research and Consultancy | 9437306597 |
| 10 | Dr. J. Anandkumar | Associate Dean, Research and Consultancy | 9669715209 |
| 11 | Dr. Manwendra K. Tripathi | Associate Dean, Research and Consultancy | 8103766514 |
| 12 | Dr. Gangadhar Ramtekkar | Dean, Planning and Development | 9425508900 |
| 13 | Dr. Shirish V. Deo | Associate, Planning and Development | 9713099399 |
| 14 | Dr. Ajay Vikram Ahirwar | Associate, Planning and Development | 9303120369 |
| 15 | Dr. A K Tiwari | Dean, Faculty Welfare | 07716532292 |
| 16 | Dr. Lata Sheo Bachan Upadhyay | Associate, Faculty Welfare | 9752510082 |
| 17 | Dr. Mridu Sahu | Associate, Faculty Welfare | 9826501139 |
| 18 | Dr. Shubhashis Sanyal | Dean (Corporate Relation and Resource Mobilization) | 9826425326 |
| 19 | Dr. N. D. Londhe | Registrar | 9039898860 |
| 20 | Dr. Manoj Pradhan | Chief Warden Boys' Hostel & Warden, Hostel-F | 9826540711 |
| 21 | Dr. (Mrs.) S. Gupta | Chief Warden Girls Hostel & Warden, Hostel-PG | 9993244929 |
| 22 | Dr. Debashis Sanyal | HOD, Architecture | 9826131952 |
| 23 | Dr. N. Vishwakarma | HOD, Applied Geology | 9425614577s |
| 24 | Dr. Arindam Bit | HOD, Biomedical Engg. | 9399603267 |
| 25 | Dr. Pratima Gupta | HOD, Bio Technology | 8871830586 |
| 26 | Dr. Bidyut Mazumdar | HOD, Chemical Engg. | 9826051120 |
| 27 | Dr. Laxmikant Yadu | HOD, Civil Engg. | 9425216529 |
| 28 | Dr. Dilip Singh Sisodia | HOD, Computer Science & Engg. | 8462808174 |
| 29 | Dr. Shyama Prasad Mahapatra | HOD, Chemistry | 9098411198 |
| 30 | Dr. Sapan Mohan Saini | HOD, Physics | 9179193464 |
| 31 | Dr. Tripti Swarnkar | HOD, M. C. A. | 9300616771 |
| 32 | Dr. Sujit Kumar Samanta | HOD, Mathematics | 9131849701 |
| 33 | Dr. Samir Bajpai | HOD, Humanities & Social Sciences | 9826167065 |
| 34 | Dr. Sachin Jain | HOD, Electrical Engg. | 9441700975 |
| 35 | Dr. Bijayananda Patnaik | HOD, Electronics and Communication Engg. | 9439322631, |
| 36 | Dr. Sudhakar Pandey | HOD, Information Technology | 7974763176 |
| | | | 9407627136 |
| 37 | Dr. N.V. Swamy Naidu | HOD, Mechanical Engg. | 9963390988 |
| 38 | Dr Pankaj Dewangan | HOD, Mining Engg. | 9826651855 |
| 39 | Dr. Subhas Ganguly | HOD, Metallurgical Engg. | 9433396665 |

ANTI RAGGING HELP LINE

| | | | |
|----|----------------------------|---|-------------|
| 40 | Mr. Rupendra Dewangan | Assistant Grade-III (Asst. to Chief Warden) | 8878397585 |
| 41 | Mr. Punoo Ram Nishad | Caretaker, Hostel- (Kotumsar) | 8827365422 |
| 42 | Dr. D. S. Sisodia | Warden, Hostel-A (Mainpat) | 9425371030 |
| 43 | Mr. Amit Verma | Caretaker, Hostel- A (Mainpat) | 7694918789 |
| 44 | Dr. Anuj Kumar Shukla | Warden, Hostel-B (Chitrakote) | 9136271032 |
| 45 | Mr. Bharat Yadav | Caretaker, Hostel-B (Chitrakote) | 9300219295 |
| 46 | Dr. Ayush Khare | Warden, Hostel-H (Sirpur) Block-III | 9425213445 |
| 47 | Mr. Manish Chandrakar | Caretaker, Hostel-H (Sirpur), Block-III | 8120273278 |
| 48 | Dr. P. K. Choudhary | Warden, Hostel-D (Malhar) | 9406145088 |
| 49 | Mr. Yogesh Verma | Caretaker, Hostel-D(Malhar) | 9302312909 |
| 50 | Dr. Pradeep Singh | Warden, Hostel-H,Block-I (Sirpur) | 9407627366 |
| 51 | Mr. Sourabh Singh | Caretaker, Hostel-H, Block-I (Sirpur) | 7067825794 |
| 52 | Dr. Sanjay Kumar | Warden, Hostel-H,Block-II (Sirpur) | 9407714701 |
| 53 | Mr. Santosh Kumar Nishad | Caretaker, Hostel-H, Block-II (Sirpur) | 9179104314 |
| 54 | Dr. Manju Pandey | Warden PG Girls Hostel | 9754852314 |
| 55 | Dr. Hari priya Vemuganti | Warden Girls Hostel-(Mahanadi) | 9948226112 |
| 56 | Miss Geetanjali Sahu | Matron Girls Hostel-PG | 7000227938 |
| 57 | Dr. (Mrs.) Deepmala Sharma | Warden Girls Hostel-(Indravati) | 7489465263 |
| 58 | Mrs. Deepika | Matron Girls Hostel-(Indravati) | 7987365212 |
| 59 | Mrs. Haripriya | Matron Girls Hostel-(Mahanadi) | 8319137011 |
| 60 | Mr. Balram Nayak | Security Officer | 7587061831 |
| 61 | Dr. Soumya Agrawal | Medical Officer | 8839317160 |
| 62 | Dr. Shubha B. Koshley | Medical Officer | 09827238401 |
| 63 | Dr. Sameer Sonkar | Medical Officer | 09039626824 |

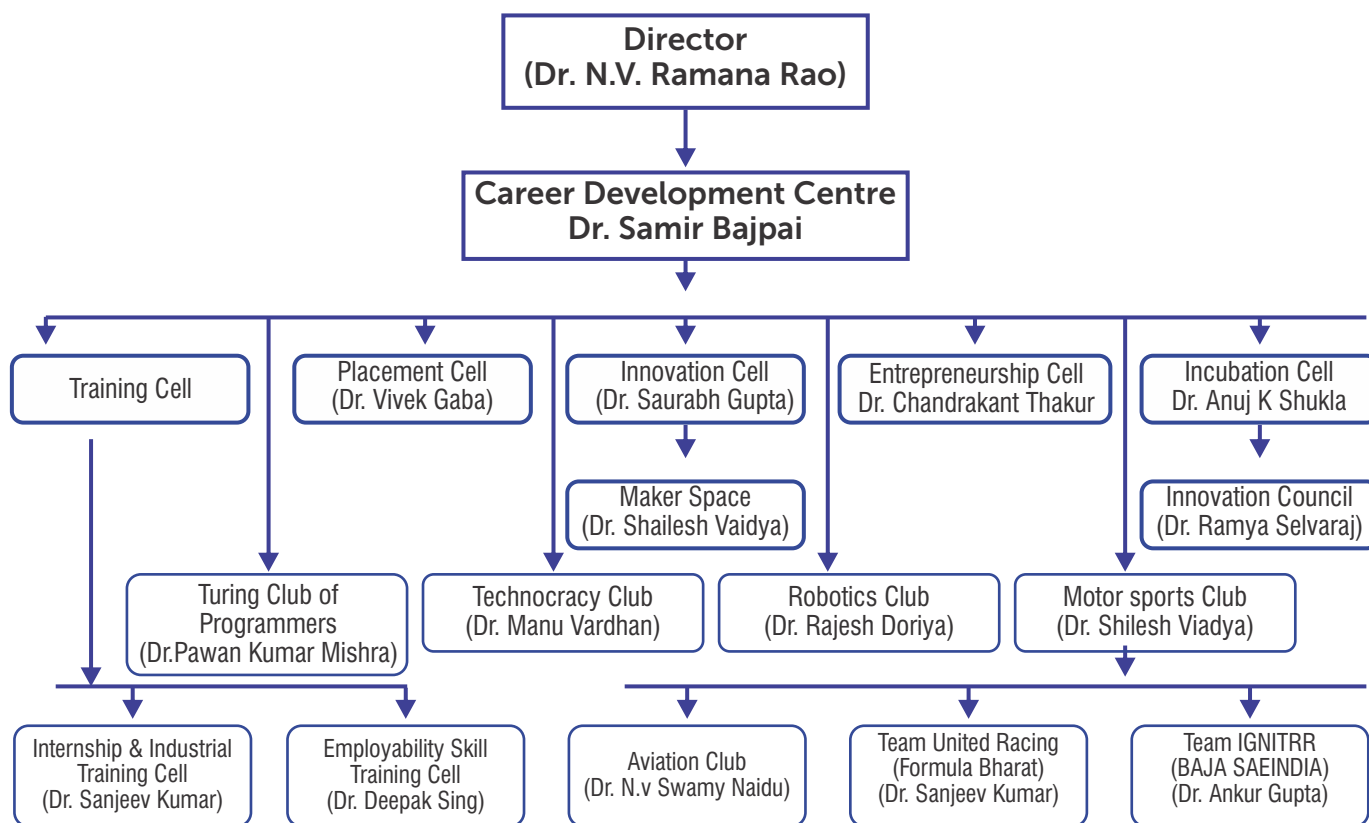
Career Development Centre

Career is not merely confined to the placement of the students through campus selection, but in present scenario, it is expanded to all-round, holistic and sustainable professional growth. Therefore, developing soft skills, nurturing innovation, supporting entrepreneurial approach and inculcating managerial skills are indispensable for fulfilling long-term professional career of the students.

Aiming to foster the career of students, Dr. N.V. Ramana Rao, Director, NIT Raipur has constituted the Career Development Center (CDC) of the Institute on 26th June 2018. The CDC intends to support the students to aspire beyond the campus selections promoting innovation, entrepreneurship and skill developments.

Innovation and Entrepreneurship Cell is also under the Career Development Centre. I & E Cell focuses on holistic development of students by providing them innovation and entrepreneurial skills and opportunities to solve some real-life problems that can have potential for a successful enterprise.

Under the Cell, students are encouraged to apply innovations to technical solutions of various problems and work towards their own startups. Students are regularly exposed to successful startups, entrepreneurs, and role-models. A Makerspace facility-A coworking space for students - is available to students for tinkering with various ideas and develop prototypes. Students are encouraged to take part in MHRD Innovation Cell activities, Hackathons, Entrepreneurship Summits, Webinars, Workshops, Exhibitions, and various competitions. The Cell is being looked after by faculty in charges - Dr. Saurabh Gupta and Dr. Chandrakant Thakur. The CDC of the Institute will be led by Dr. Samir Bajpai.



Counseling Cell & Value Education

The institute offers counselling services to all its students through a unique approach based on development of human consciousness through value education. Getting admission in a professional program in a reputed institute is a landmark milestone. However, now equally important is to tread the path of professional education with dedication and hard work, with focus on the goal of professional and personal success and happiness. To traverse this journey, the mind should have to be clear, stress free and calm.

Most of the students move out of their home for the first time. Transition to college life, with probable change of language, without family support system, in a new environment is fairly challenging for a few students. Counselling Cell provides a counsellor for helping the students to overcome any kind of stress or anxiety. The counsellor is always available to help students to resolve their problems and pursue their goals with a calm and determined mind.

To help students develop human consciousness to lead a value-based life - a fundamental requirement to ensure success, both professional and personal, and more importantly, happiness-the institute offers a course on Value Education to the second year students. In this course the students are empowered to analyze and understand the source or root cause of problems and find solutions so that they can live a successful and happy life.

Ordinance & Regulations (B.Tech. & B.Arch. Programs)

The B.Tech. and B.Arch. ordinance under CBCS scheme of courses are available in the institute website.

To download the B.Tech. Ordinance, please click the following link:

<http://www.nitr.ac.in/downloads/ordinance/B%20Tech%20Ordinance%20Final%20version.pdf>

To download the B.Arch. Ordinance, please click the following link:

http://www.nitr.ac.in/downloads/ordinance/FINAL%20Ordinance_B.Arch._%2018-6-19.pdf

Academic Calendar

Academic Calendar

Autumn 2025-2026

NIT Raipur

UG Ist Semester (Tentative)

Sa Su M Tu W Th F Sa Su M Tu W Th F Sa Su M Tu W Th F Sa Su M Tu W Th F Sa Su M
 AUGUST 2025

| | | | | | | | | | | | | | | | | | | | | | | | | | | | | | | | | | | | |
|--------|----|----|----|----|----|--------------------------|---|---|---|---|---|---|---|----|----|----|----|----|----|----|----|----|----|----|----|----|----|----|----|----|----|----|----|----|----|
| 27 | 28 | 29 | 30 | 31 | 1 | 2 | 3 | 4 | 5 | 6 | 7 | 8 | 9 | 10 | 11 | 12 | 13 | 14 | 15 | 16 | 17 | 18 | 19 | 20 | 21 | 22 | 23 | 24 | 25 | 26 | 27 | 28 | 29 | 30 | 31 |
| August | | | | | 23 | Induction Program | | | | | | | | | | | | | | | | | | | | | | | | | | | | | |
| August | | | | | 26 | Commencement of classes. | | | | | | | | | | | | | | | | | | | | | | | | | | | | | |

SEPTEMBER 2025

| Su | M | Tu | W | Th | F | Sa | Su | M | Tu | W | Th | F | Sa | Su | M | Tu | W | Th | F | Sa | Su | M | Tu | W | Th | F | Sa | Su | M | | | | | | | |
|-----------|---|----|---|----|---|-------|---|---|----|----|----|----|----|----|----|----|----|----|----|----|----|----|----|----|----|----|----|----|----|----|---|---|---|---|---|---|
| 31 | 1 | 2 | 3 | 4 | 5 | 6 | 7 | 8 | 9 | 10 | 11 | 12 | 13 | 14 | 15 | 16 | 17 | 18 | 19 | 20 | 21 | 22 | 23 | 24 | 25 | 26 | 27 | 28 | 29 | 30 | 1 | 2 | 3 | 4 | 5 | 6 |
| September | | | | | | 2 | Last Date for Dropping Courses | | | | | | | | | | | | | | | | | | | | | | | | | | | | | |
| September | | | | | | 23-26 | Parent-Teacher Interaction (Cases of Concern) in online/offline mode. | | | | | | | | | | | | | | | | | | | | | | | | | | | | | |

OCTOBER 2025

| 2023-24 | | | | | | | | | | | | | | | | | | | | | | | | | | | | | | | | | | | | |
|-----------|----|----|---|------------|----|---|----|---|----|---|----|----|----|----|----|----|----|----|----|----|----|----|----|----|----|----|----|----|----|----|----|----|----|---|---|---|
| Tu W Th F | | | | Sa | Su | M | Tu | W | Th | F | Sa | Su | M | Tu | W | Th | F | Sa | Su | M | Tu | W | Th | F | Sa | Su | M | Tu | W | Th | F | | | | | |
| 28 | 29 | 30 | 1 | 2 | 3 | 4 | 5 | 6 | 7 | 8 | 9 | 10 | 11 | 12 | 13 | 14 | 15 | 16 | 17 | 18 | 19 | 20 | 21 | 22 | 23 | 24 | 25 | 26 | 27 | 28 | 29 | 30 | 31 | 1 | 2 | 3 |
| October | | | | 10-17 | | | | Midsemester Theory Exams (CBCS-scheme, Half of the Syllabus). | | | | | | | | | | | | | | | | | | | | | | | | | | | | |
| October | | | | 30- 03 Nov | | | | Midsemester Practical Exams during regular lab classes (CBCS-scheme). | | | | | | | | | | | | | | | | | | | | | | | | | | | | |

NOVEMBER 2025

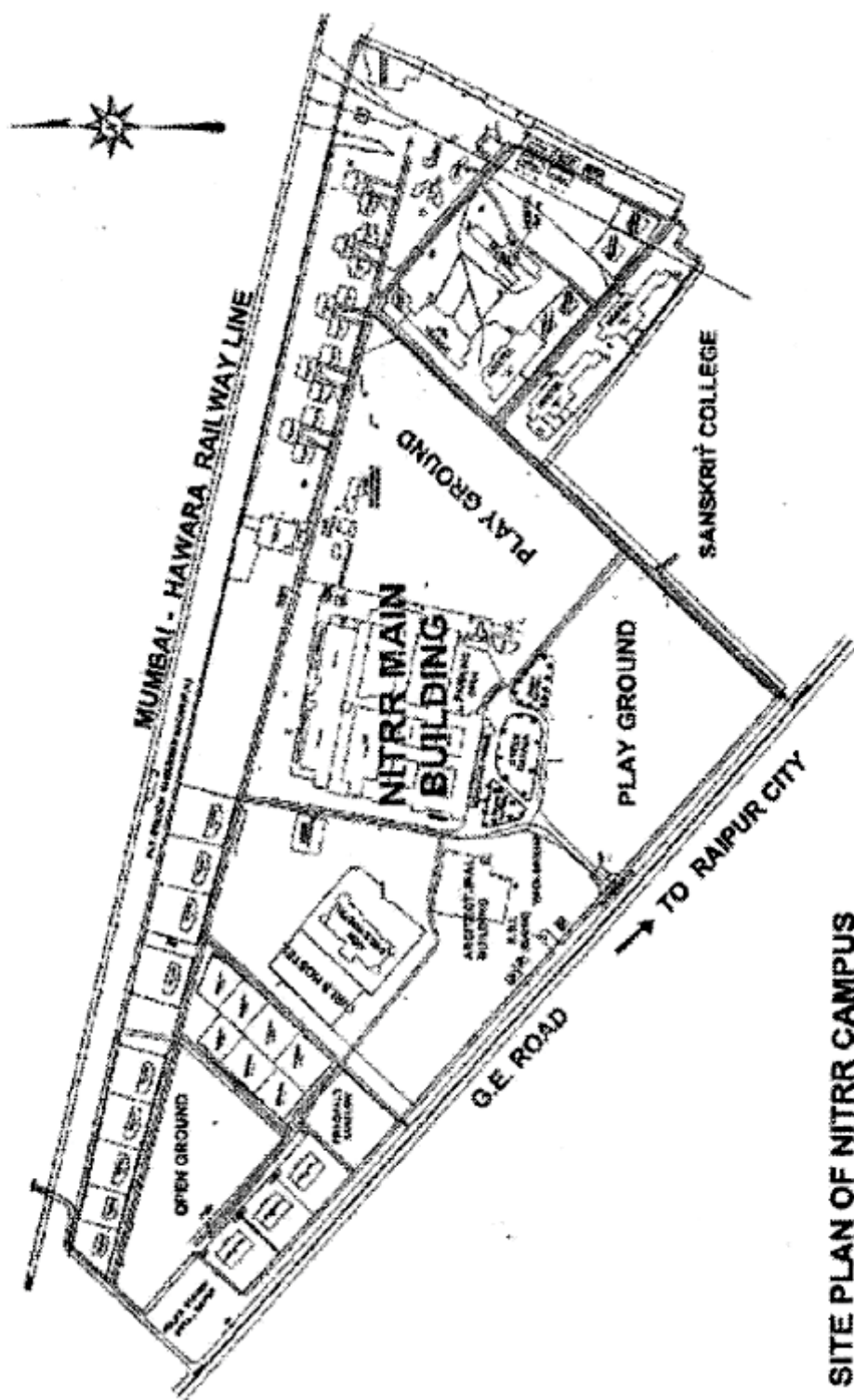
| | | | | | F | Sa | Su | M | Tu | W | Th | F | Sa | Su | M | Tu | W | Th | F | Sa | Su | M | Tu | W | Th | F | Sa | Su | | | | | | | |
|----------|----|----|----|----|-------|--|----|---|----|---|----|---|----|----|----|----|----|----|----|----|----|----|----|----|----|----|----|----|----|----|----|----|----|----|----|
| 26 | 27 | 28 | 29 | 30 | 31 | 1 | 2 | 3 | 4 | 5 | 6 | 7 | 8 | 9 | 10 | 11 | 12 | 13 | 14 | 15 | 16 | 17 | 18 | 19 | 20 | 21 | 22 | 23 | 24 | 25 | 26 | 27 | 28 | 29 | 30 |
| November | | | | | 3 | Submitting marks of midsemester exams with HoDs (CBCS-scheme). | | | | | | | | | | | | | | | | | | | | | | | | | | | | | |
| November | | | | | 11 | Declaration of provisional list for award of 'R' grade. | | | | | | | | | | | | | | | | | | | | | | | | | | | | | |
| November | | | | | 17 | Last Date for submitting appeal by student against award of 'R' grade. | | | | | | | | | | | | | | | | | | | | | | | | | | | | | |
| November | | | | | 25-29 | End semester practical/viva-voce (along with practical classes) | | | | | | | | | | | | | | | | | | | | | | | | | | | | | |
| November | | | | | 28 | Declaration and Submission of final list for award of 'R' grade. | | | | | | | | | | | | | | | | | | | | | | | | | | | | | |
| November | | | | | 25-30 | Student Feedback Activities | | | | | | | | | | | | | | | | | | | | | | | | | | | | | |
| November | | | | | 28 | Last date of UG classes (CBCS-scheme). | | | | | | | | | | | | | | | | | | | | | | | | | | | | | |
| November | | | | | 28 | Last date of applying for withdrawal from semester (CBCS-scheme). | | | | | | | | | | | | | | | | | | | | | | | | | | | | | |

DECEMBER 2025

| Su | Tu | W | Th | F | Sa | Su | M | Tu | W | Th | F | Sa | Su | M | Tu | W | Th | F | Sa | Su | M | Tu | W | Th | F | Sa | Su | M | Tu | | | | | | | | | | | | | | | | | | | | | | | | | | | | | | | | | | | | | | | |
|----------|----|---|----|---|---------------------------|----|---|----|---|----|----|----|----|----|----|----|----|----|----|----|----|----|----|----|----|----|----|----|----|----|----|--|--|--|--|--|---|--|--|--|--|--|--|--|--|--|--|--|--|--|--|--|--|--|--|--|--|--|--|--|--|--|--|--|--|--|--|--|
| 30 | 1 | 2 | 3 | 4 | 5 | 6 | 7 | 8 | 9 | 10 | 11 | 12 | 13 | 14 | 15 | 16 | 17 | 18 | 19 | 20 | 21 | 22 | 23 | 24 | 25 | 26 | 27 | 28 | 29 | 30 | 31 | | | | | | | | | | | | | | | | | | | | | | | | | | | | | | | | | | | | | |
| | | | | | End semester examination. | | | | | | | | | | | | | | | | | | | | | | | | | | | | | | | | | | | | | | | | | | | | | | | | | | | | | | | | | | | | | | | |
| December | | | | | 12 | | | | | | | | | | | | | | | | | | | | | | | | | | | | | | | | Last date for showing answer scripts | | | | | | | | | | | | | | | | | | | | | | | | | | | | | | | |
| December | | | | | 15 | | | | | | | | | | | | | | | | | | | | | | | | | | | | | | | | Finalization of grades by DAC. | | | | | | | | | | | | | | | | | | | | | | | | | | | | | | | |
| December | | | | | 16 | | | | | | | | | | | | | | | | | | | | | | | | | | | | | | | | Result/Grades approved by DAC to be sent to Exam Section. | | | | | | | | | | | | | | | | | | | | | | | | | | | | | | | |
| December | | | | | 16 | | | | | | | | | | | | | | | | | | | | | | | | | | | | | | | | Submitting list of students approved for 'NA' grades to Dean, AA. | | | | | | | | | | | | | | | | | | | | | | | | | | | | | | | |
| December | | | | | 17 | | | | | | | | | | | | | | | | | | | | | | | | | | | | | | | | Declaration of interim result. | | | | | | | | | | | | | | | | | | | | | | | | | | | | | | | |
| December | | | | | 20 | | | | | | | | | | | | | | | | | | | | | | | | | | | | | | | | Last date of appealing for arbitration, if any. | | | | | | | | | | | | | | | | | | | | | | | | | | | | | | | |
| December | | | | | 23 | | | | | | | | | | | | | | | | | | | | | | | | | | | | | | | | Declaration of final results. | | | | | | | | | | | | | | | | | | | | | | | | | | | | | | | |
| December | | | | | 25 | | | | | | | | | | | | | | | | | | | | | | | | | | | | | | | | Winter Vacation Starts | | | | | | | | | | | | | | | | | | | | | | | | | | | | | | | |

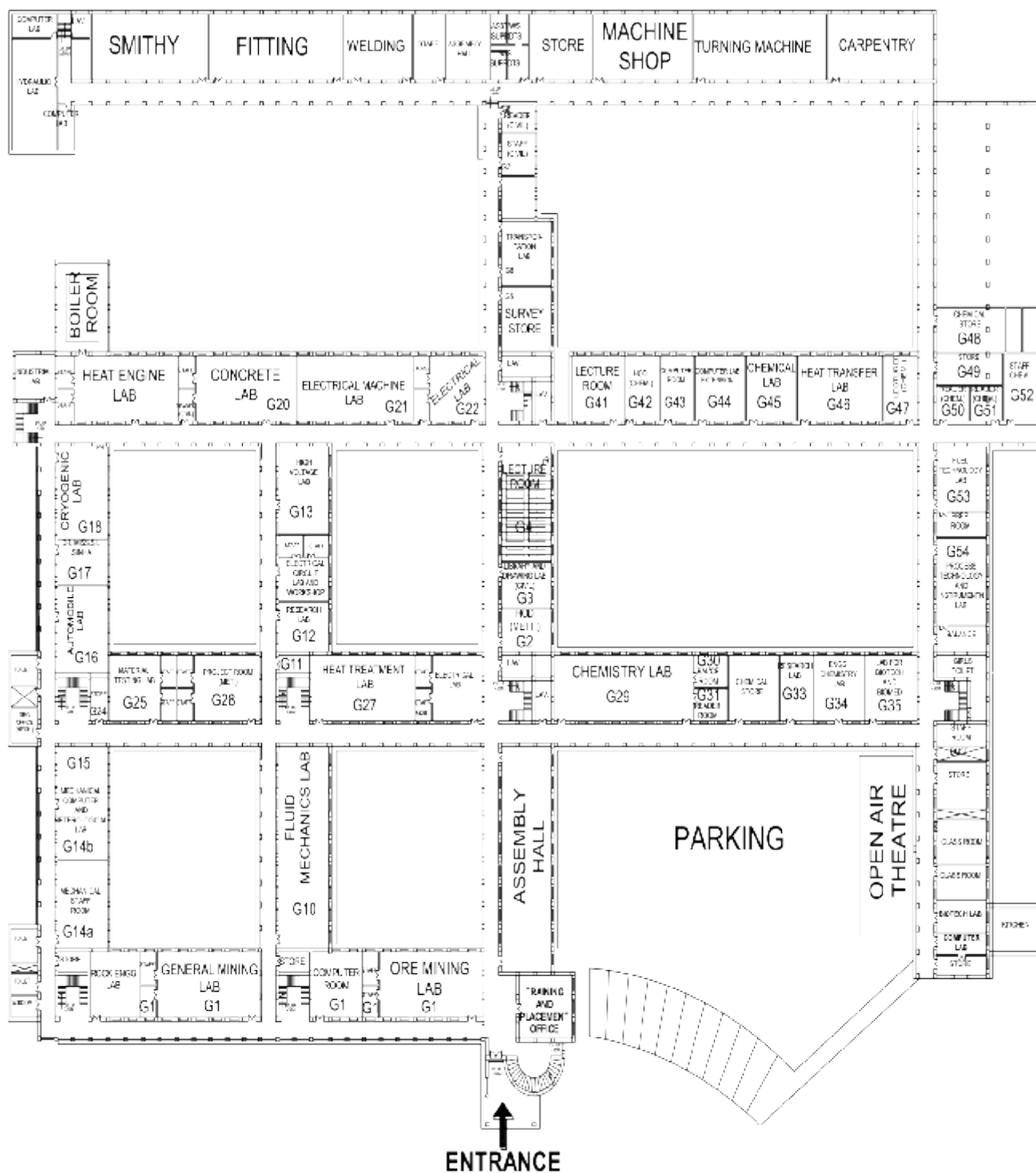
JANUARY 2026

| | | | W | Th | F | Sa | Su | M | Tu | W | Th | F | Sa | Su | M | Tu | W | Th | F | Sa | Su | M | Tu | W | Th | F | Sa | Su | M | Tu | W | Th | F | Sa | |
|----|----|----|----|---------------|---|----|----|---|--|---|----|---|----|----|----|----|----|----|----|----|----|----|----|----|----|----|----|----|----|----|----|----|----|----|---|
| 28 | 29 | 30 | 31 | 1 | 2 | 3 | 4 | 5 | 6 | 7 | 8 | 9 | 10 | 11 | 12 | 13 | 14 | 15 | 16 | 17 | 18 | 19 | 20 | 21 | 22 | 23 | 24 | 25 | 26 | 27 | 28 | 29 | 30 | 31 | 1 |
| | | | | January 2-5 | | | | | Registration for 2nd Semester (Offline) | | | | | | | | | | | | | | | | | | | | | | | | | | |
| | | | | January 2 | | | | | Classes Starts for 2nd Semester | | | | | | | | | | | | | | | | | | | | | | | | | | |
| | | | | January 2-6 | | | | | Registration for supplementary examination | | | | | | | | | | | | | | | | | | | | | | | | | | |
| | | | | January 12-17 | | | | | Conduction of Supplementary Exam of 1st Semester | | | | | | | | | | | | | | | | | | | | | | | | | | |
| | | | | January 20 | | | | | Last date for showing answer scripts of supplementary exam | | | | | | | | | | | | | | | | | | | | | | | | | | |
| | | | | January 22 | | | | | Final Result Declartion of supplementary exam | | | | | | | | | | | | | | | | | | | | | | | | | | |
| | | | | January 26-28 | | | | | Final Registration in MIS | | | | | | | | | | | | | | | | | | | | | | | | | | |



SITE PLAN OF NITRR CAMPUS

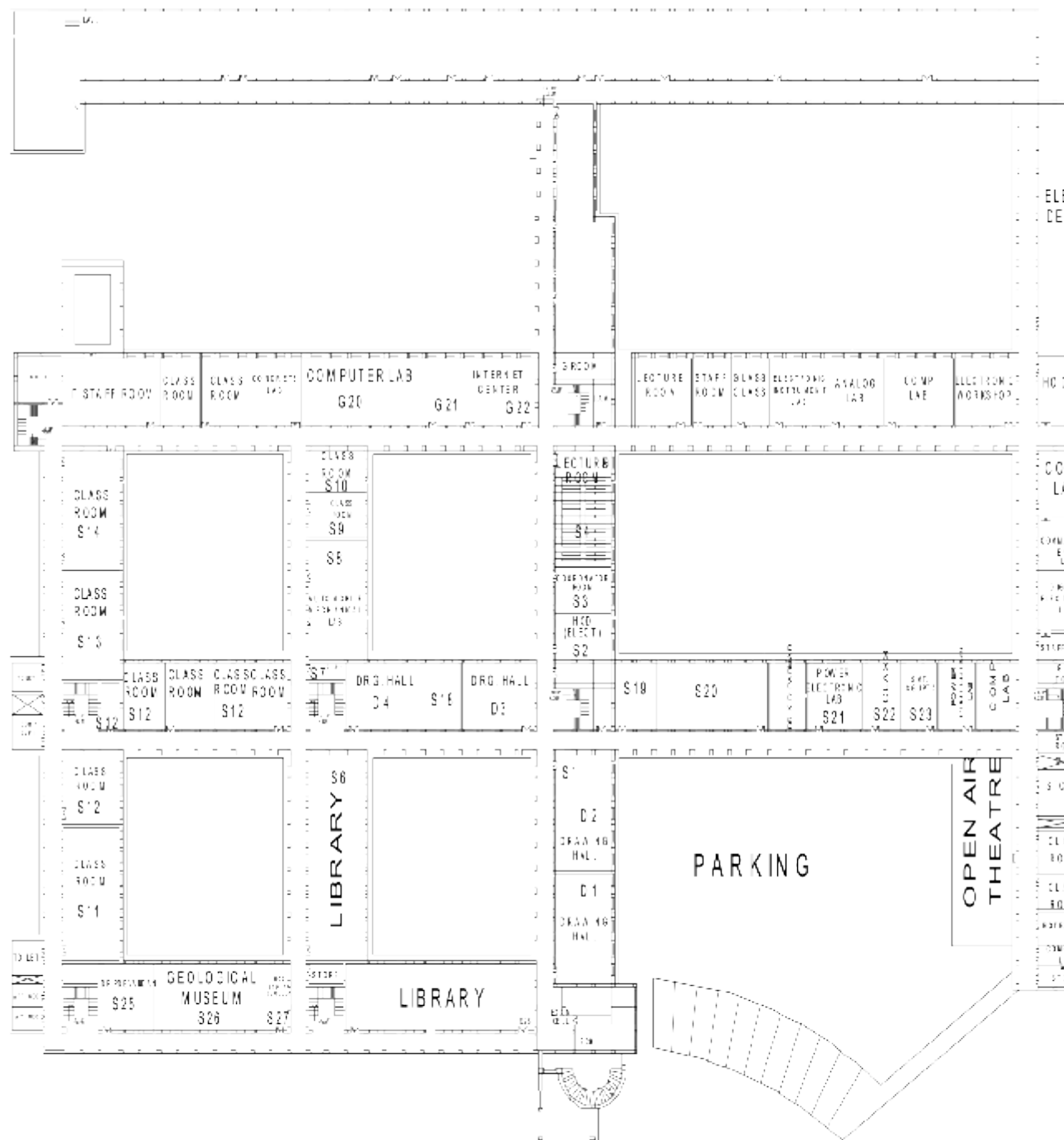
Ground Floor Plan of Institute's Main Building



First Floor Plan of Institute's Main Building



Second Floor Plan of Institute's Main Building





NATIONAL INSTITUTE OF TECHNOLOGY RAIPUR

(An Institute of National Importance)

G.E. Road, Raipur (Chhattisgarh) 492 010
Ph.: +91 771 - 2254200, Fax : (0771) 2254600

Website : www.nitr.ac.in, E-mail : director@nitr.ac.in, registrar@nitr.ac.in